

COMMISSIONING SERVICES TO SUPPORT VICTIMS AND REDUCE OFFENDING

A GUIDE TO APPLYING FOR FUNDING
2018/19





POLICE & CRIME
COMMISSIONER

Serving
Hampshire
Isle of Wight
Portsmouth
Southampton

CONTENTS

1	Introduction
3	The Police and Crime Commissioner's Vision, Mission and Priorities
5	Information to consider before you apply
9	Crime Prevention
11	Cyber Crime
12	Domestic Abuse
13	Harmful Cultural Practices
14	Hate Crime
15	Managing Offenders
16	Older Persons
17	Restorative Practices
18	Sexual Crime
19	Supporting Victims
21	Vulnerable and at Risk
23	Youth Diversion
24	Final Thoughts

Appendices:

26	Appendix 1: Grant Criteria and Scoring
27	Appendix 2: Grant Process
29	Appendix 3: Application Notes
33	Appendix 4: Partnership Contact Details
35	Appendix 5: Police and Crime Commissioner's Contact Details

INTRODUCTION

The Police and Crime Commissioner, Michael Lane, has produced his Police and Crime Plan for 2016 – 2021. His ambition, through his Commissioning and Partnerships Team, is to reduce offending and support victims, enabling everyone to realise their life potential without being drawn into the Criminal Justice System.

The Commissioner has pledged to secure services that empower partners and potential partners through regular opportunities to bid for grant funding for projects and contracts.

The Commissioner is directly responsible for only a small percentage of the funding that goes towards building safer communities, with many other funders at local, regional and national levels. By working with our funding partners, we want to ensure that the best possible use is being made of the resources available so that all funders are agreeing priorities and working together to ensure that money is targeted and sustainable. We will conduct a series of strategic reviews of the sectors we fund, enabling us to gain a better understanding of the supply and demand of services.

In 2017/18 the Commissioner invested £3,877,392 in the local community through a range of services to support victims and initiatives to reduce offending. The funding was invested through contracts for core services to safeguard the most vulnerable to crime, and through the annual Safer Communities Fund grant programme. For 2018/19 the Commissioner is again inviting organisations to apply for funding to secure the provision of services that will reduce offending, support victims of crime and victims of anti-social behaviour.

VULNERABLE AND AT RISK

- Projects to help prevent child sexual exploitation (CSE) through awareness raising and improved early intervention.
- Crime prevention projects to help older people and those socially isolated who can be more vulnerable to scams and anti-social behaviour.
- Bespoke services targeted at children and young people who are vulnerable or at risk of offending and entering the criminal justice system.
- New life-saving equipment for Hampshire Search and Rescue.

WORKING WITH YOUNG PEOPLE

Funding for clubs and activities for young people so they have a positive focus for their energy and can access support, advice and guidance in order to reduce offending.

WORKING WITH OFFENDERS

Projects that work with offenders to address substance misuse and to help them access pathways and material support (ie debt advice and housing) that can help reduce re-offending.

Total funding awarded for 2017/18
£3,877,392

RESTORATIVE PRACTICES

An inclusive Restorative Justice service that gives victims the opportunity to communicate with the offender, in the most appropriate way for them. It offers them the opportunity to express how they have been affected by the crime and have their questions answered helping them on their path to recovery.

"I was pleased to be given the opportunity and choice to take part in Restorative Justice. How could I ever gain any 'control' back without allowing them to hear my voice?"

Mediation services to deal with community and neighbour disputes before they escalate.

SUPPORTING VICTIMS

Victim Care Service to provide support for victims of crime to cope with, and recover from, the harmful effects of the crime they have experienced. Supports approximately 70,000 victims of crime each year in Hampshire, the Isle of Wight, Portsmouth and Southampton.

Advocacy support for victims of stalking

Projects and services that work with those affected by domestic abuse offering support, increasing understanding and helping to break the cycle of abuse.

"I would hardly recognise that girl that was too afraid to talk to anyone and I'm getting the real me back again."

Providing emotional support, counselling, practical support and advice to adults and families affected by sexual crime.

Initiatives to increase identification, reporting and support to the victims of hate.

For more information on the specific organisations and projects funded go to hampshire-pcc.gov.uk

There will be continual dialogue with providers to ensure that we can harness and benefit from the knowledge and intelligence of those people with direct experience of what works and what is needed: the statutory agencies, voluntary agencies, the people who use services and their representative agencies.

Nothing can be achieved without the tremendous work of hundreds of voluntary organisations; from small and local, to large and national. It is our responsibility to do what we can to ensure that those organisations are informed and working efficiently with reliable funding to enable the Commissioner to achieve his vision and priorities.

A Commissioning and Partnerships Strategy has been produced which informs residents of how the Commissioner and his team will make real improvements to the quality of life of people in Hampshire, Isle of Wight, Portsmouth and Southampton over the next four years.

This paper provides an update on the commissioning of contracted partnership services and provides guidance on the available opportunities when applying for grant funding in specific areas of work. Please ensure that you read both the 'applications welcomed' and the 'application exclusions' sections within each theme you wish to apply for.



THE POLICE AND CRIME COMMISSIONER'S VISION, MISSION & PRIORITIES

Following his election in May 2016, the Commissioner wrote his first Police and Crime Plan. The Plan is a high level strategic document setting out the Commissioner's vision and priorities for policing and crime reduction across the Hampshire Policing Area until 2021.

In preparing the Plan, the Commissioner has drawn his Vision, Mission and Priorities in such a way that these should not require substantial amendment over this period (though they will be reviewed and, where necessary, refreshed on an annual basis to ensure that they remain relevant). Further details on the vision, mission and priorities can be found below:

VISION

The Commissioner's vision is that Hampshire, the Isle of Wight, Portsmouth and Southampton are amongst the safest places to live, work and visit, so that people are empowered to realise their life opportunities.

MISSION

You, your family, and your community safer.

STRATEGIC PRIORITIES

The Commissioner's overarching priority is to stand up for every resident; by being visible, accessible and accountable to the people he represents, ensuring their concerns are heard and addressed. In order to achieve this the Commissioner will:



HOW YOU CAN HELP

The Commissioner is inviting organisations to tell him how they can work with him to achieve his vision and make your communities safer. He is looking for new and exciting approaches, whilst still supporting those ideas that have been proven to work.

THE POLICE AND CRIME PLAN



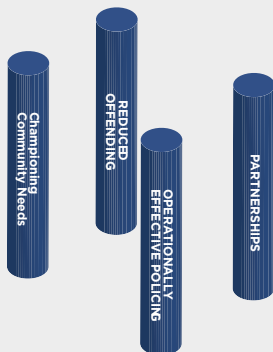
COMMUNITY

My plan starts with the community. The first action is community and it is from the community that my mandate is given.



SAFER

The one test that applies to everything and my mission.



PILLARS

These four key strategic priorities of the Plan have equal status and will define all that I do over the coming years.

- Championing community needs
- Partnerships
- Enabling operationally effective policing
- Reduced offending



DELIVERY

The Delivery Plan sets out the detailed approach to delivering the individual components, outcomes and benefits.

THE STRATEGIC PILLARS OF THE POLICE AND CRIME PLAN

The four strategic pillars of this plan support the overarching mission “You, Your Family and Your Community – Safer” and also the responsibility the Commissioner holds from his electoral mandate ‘to stand up for every resident, being visible, accessible and accountable to the people I represent, ensuring their comments are heard and addressed.’

INFORMATION TO CONSIDER BEFORE YOU APPLY

You may wish to consider the following areas before you apply for funding:

WORKING IN PARTNERSHIP

The Commissioner believes partnership working is important and has included it in one of his strategic priorities; 'strengthen partnerships to work together to reduce crime, promote public safety and create vibrant, inclusive communities'. A large part of the work of the Commissioner's team is developing shared understandings with partner agencies; in particular local authorities, health, Hampshire Constabulary, the voluntary sector, service users and victims.

To this end, the Commissioner's team will be consulting with local authorities and relevant partners on the applications we receive for funding. Each application will be discussed with the most appropriate person or team in the relevant area. We therefore strongly advise anyone applying for funding to approach their local Community Safety Partnership (CSP) representatives or relevant lead local authority officer for that subject to gain the support for their project. Applications will be scored based on the support of partners so it is in your best interests to gain their support. Contact details for each representative can be found under appendix 4.

PERFORMANCE MANAGEMENT

Each successful applicant will be required to provide evidence on the performance of their project against agreed performance indicators, appropriate for the level of funding invested in each project. Discussions on the performance indicators will take place at the time an offer of funding is made, so that both the Commissioner and the applicant know the level of expectation from both parties.

The fundamental principles the Commissioner follows to manage the performance of successful bids are as follows:

- To create an effective monitoring and evaluation framework that is neither bureaucratic nor burdensome
- A process which is proportionate for organisations
- A process which captures added value of projects for the Commissioner
- A process which provides good information for the Commissioner for his agenda for change

A combination of quantitative and qualitative performance information will be required. Depending on the size of the grant awarded, successful applicants will be required to report back on either a quarterly or six monthly basis. As part of the monitoring and evaluation process, successful applicants should expect an observational visit to be conducted by a member of the Commissioner's team.

Performance information will be used to analyse the performance and progress of each project to ensure they are delivering against their agreed indicators and the Commissioner's priorities to ensure that the project remains strategically relevant. Performance information will be used to support future decision making with regard to further applications for funding.

RESEARCH AND METHODOLOGY

Applications need to meet the priorities of the Police and Crime plan and the Commissioning themes. Applicants will be expected to evidence the need for funding based on research, clear stated outcomes and demonstrating how success will be evaluated. All of this will be taken into account when scoring each application.

MATCHED FUNDING

Applications are scored against a number of criteria, one of which is funding secured towards your project from elsewhere. Other secured funding will greatly strengthen your application for funding from the Commissioner and we therefore encourage you to approach other organisations to support your project.

WORKING IN SCHOOLS OR PRISONS

The Commissioner receives a number of applications for projects to work in schools / colleges or in prisons. Applications are not always clear if prior arrangements have been made with the institution that the project plans to work with. Therefore, applications of this nature should provide clear details of who they have consulted with and what arrangements have been made to deliver projects in these institutions.

PROMOTION OF FUNDING ALLOCATED AND PROJECTS SUPPORTED

In the future, the projects and services supported by the Commissioner will be given a sharper focus and will be promoted as much as possible to the communities of Hampshire, Isle of Wight, Portsmouth and Southampton, particularly using the Commissioner's website.

The Commissioning Team will look to promote the work of each individual project by including a brief summary of each grant funded project on the Commissioner's website. This will include details of how to get in touch and a short video clip of individual projects, showcasing the work they do and how they contribute towards making communities safer.



INFORMATION SHARING

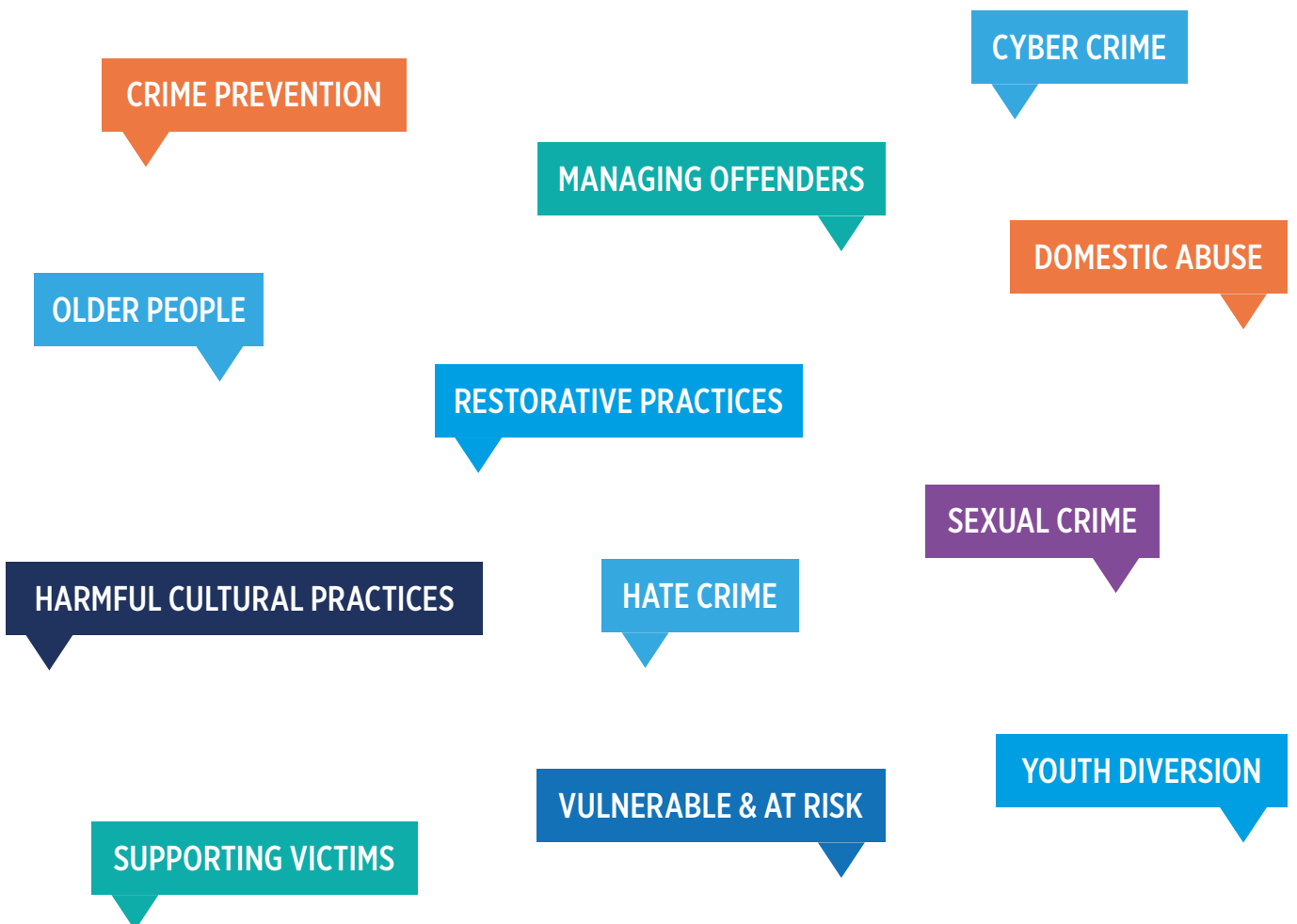
To aid and strengthen partnerships, partners are encouraged to use the Partnership Database. It provides organisations with a secure information sharing tool to manage cases and incidents for which multi-agencies are involved. The Partnership Database facilitates the joining up of services which contributes to the Commissioner’s Police and Crime Plan to ‘strengthen partnerships to work together to reduce crime, promote public safety and create vibrant communities’.

The Partnership Database (SafetyNet) is a valuable tool for issues such as anti-social behaviour, for monitoring vulnerability and repeat victims and offenders in a secure database where partners can confidently share appropriate information with linked partners, thus complimenting and strengthening existing working partnerships.

COMMISSIONING THEMES

To help organisations with your applications, the Commissioner’s Team has identified some key areas that encompass the broad range of work that comes under the remit of the Commissioning and Partnerships team. These areas of work, much like the four key strategic priorities of the plan, have equal status and importance.

The themes found below by no means preclude any applications for services / projects that sit outside of these areas and we encourage you to propose new approaches and initiatives to the Commissioner.



*Don't forget,
the deadline for
applications is*
OCTOBER 31ST



**POLICE & CRIME
COMMISSIONER**

Serving
Hampshire
Isle of Wight
Portsmouth
Southampton

CRIME PREVENTION

Although there are elements of prevention in all work supported by the Commissioner, there are certain projects and interventions that are specific to prevention and supporting those at risk of crime but cut across many working themes. This theme looks at crime prevention in general. For services targeted at young people, please see the Youth Diversion theme page.

Consultation with residents of Hampshire, Isle of Wight, Portsmouth and Southampton revealed that Anti-Social Behaviour (ASB) was high on the list of issues that most affect people. ASB covers a wide range of activity that causes harm to an individual, to their community or to their environment. This could be an action by someone else that leaves you feeling alarmed, harassed or distressed. It also includes fear of crime or concern for public safety, public disorder or public nuisance. It has a huge impact on the quality of life for both individuals and communities, and it is often targeted at those least able to protect themselves. Projects supported in the past have targeted ASB perpetrated by people of all ages, some of these include Street Pastor schemes and taxi marshalling.

Preventing and detecting crime can be difficult in rural areas. This is due to there often being fewer witnesses to rural crimes and greater opportunities for criminals to target isolated properties and businesses. The impact of these crimes can also be greater, with people feeling

more vulnerable due to their remote location. Applications are welcomed that help prevent rural crime.

Hampshire and Isle of Wight Neighbourhood Watch Association aims to promote participation in the prevention of crime and help develop caring and safe communities. There is a perception that Neighbourhood Watch is disproportionately strong in terms of membership and activity in areas of low crime but less represented in areas of high crime. The Commissioner is encouraging applications that engage with areas of higher crime and look at where improvements could be made to increase diversity of the membership, including young people, those living in areas of deprivation, LGBT and culturally diverse communities.

Services that target those individuals identified at risk of entering the criminal justice system for the first time are welcomed, in particular collaboration between services and recognition of local concern and need.

While applications for all prevention services will be considered, we would recommend that providers have an understanding of what is already available in the local area so that applications complement existing provision. The Commissioner would like to welcome local bids reflecting local circumstances and particular needs.



APPLICATIONS WELCOMED:

- We welcome projects with an aim to reduce the potential for vulnerable people to become victims of crime or anti-social behaviour
- Applications to develop the work of Neighbourhood Watch, particularly in hard to reach areas, are particularly welcomed.
- Projects addressing the effects of anti-social behaviour.
- Prevention of crime in rural areas

APPLICATION EXCLUSIONS:

- Applications for the purchase of CCTV equipment will not be considered as part of this grant around, unless it is being utilised in a new and innovative way.



CYBER BEHAVIOURS

Cybercrimes are generally broken down into one of two categories: Cyber Enabled Crimes and Cyber Dependant Crimes. Cyber Enabled Crimes are traditional crimes which can be increased in scale or reach by the use of computers, computer networks or other forms of technology (such as cyber-enabled fraud and data theft).

Cyber Dependant Crimes are crimes that can be committed only through the use of technology. Devices, for instance laptops, mobile phone, tablets, are both the tool for committing the crime, and the target of the crime. Examples include developing and propagating malware for financial gain, hacking to steal, damage, distort or destroy data and/or network or activity.

Under-reporting continues to obscure the full impact of cybercrime. In 2015 the Office of National Statistics (ONS) trialled the inclusion of cybercrime in the annual Crime Survey for England and Wales (CSEW) for the first time. The ONS estimated that there were 2.46million cyber incidents and 2.11million victims of cybercrime in the UK in 2015. These figures highlight the clear shortfall in established reporting, with only 16,349 cyber-dependent and approximately 700,000 cyber-enabled incidents reported to Action

Fraud over the same period.

Cybercrime activity is growing fast and evolving at pace, becoming both more aggressive and technically proficient. Although general cyber awareness is improving in the UK, there remains a lack of understanding of cybercrime.

Here in Hampshire, Isle of Wight, Portsmouth and Southampton from October 2016 to March 2017 there were 541 recorded fraud cases linked with online shopping and auctions. During this same time period, of cyber enabled fraud reports 28% were through the use of a phone, 14% through email and 13% via online sales.

In many cases individuals are unsure about how best to protect against these cybercrimes and how to report it when it happens. In many instances, victims may not even be aware that it has taken place.

Many of our victims are vulnerable. These vulnerabilities come in a variety of forms, all of which require long-term education and training, and sustained efforts will be required to deliver required change to keep our communities safer.

APPLICATIONS WELCOMED:

- Awareness raising of cyber behaviours around cyber stalking, romance fraud, sextortion, revenge porn, online shopping and online banking.
- Applications to prevent, and protect against, cybercrime.
- Applications to support victims of cybercrime and improve their understanding of cybercrime.

APPLICATION EXCLUSIONS:

- None – Although all applications must demonstrate how the project will support victims or raise awareness of cybercrimes and their impact upon individuals and communities.

DOMESTIC ABUSE

The UK government's definition of domestic abuse is: "any incident or pattern of incidents of controlling, coercive, threatening behaviour, violence or abuse between those aged 16 or over who are, or have been, intimate partners or family members regardless of gender or sexuality. The abuse can encompass, but is not limited to psychological, physical, sexual, financial, and emotional." The impact of domestic abuse (even when a person has achieved safety) can be severe and long lasting.

Whilst the age in the definition is '16 or over', we know that in households where there is domestic abuse, children can suffer serious long-term emotional effects. Even if they are not physically harmed, or do not see the abuse, they may hear it and still suffer emotional and psychological damage as a result.

Abuse can take different forms, including physical violence, damage to property and financial exploitation. Emotional abuse, such as humiliating language and making threats, as well as heightened sexualised behaviours are also forms of abuse.

The Commissioner has worked in partnership with Hampshire County Council and Southampton City Council to deliver domestic abuse services through contracts. The Commissioner is currently working with Portsmouth City Council and the Isle of Wight Local Authority towards contracts commencing April 2018.

For Adolescent to Parent Violence (APV) please see the Youth Prevention pages.

APPLICATIONS WELCOMED:

- Preventing domestic abuse and also supporting those affected by it
- Empowering professionals to recognise all forms of domestic abuse and be better equipped to challenge/support
- Promoting healthy relationships (if working in schools, please ensure you have agreement to deliver workshops before applying)
- Targeted work with vulnerable young people (please ensure you have agreement of a viable referral pathway to deliver any targeted work before submitting your application)
- Working with perpetrators of domestic abuse in Portsmouth

APPLICATION EXCLUSIONS:

We will not accept applications for services included in contracts. Please see appendix 4 for details of who you should consult with to clarify this. Examples of these services include:

- Community outreach support
- Independent Domestic Violence Advisers (IDVA)
- Refuge provision
- Adult support groups and emotional 1-1 support
- Perpetrators programmes in Hampshire, Isle of Wight and Southampton.

HARMFUL CULTURAL PRACTICES

Harmful Cultural Practices are forms of violence which have been committed primarily against women and girls in certain communities and societies for so long that they are considered, or presented by perpetrators, as part of accepted cultural practice.

EXAMPLES INCLUDE:

- **Female Genital Mutilation/Cutting (FGM/C)** - FGM/C is defined as injury to the female genital organs for cultural and non-medical reasons.
- **Forced Marriage** - The Home Office defines this as 'where one or both people do not (or in cases of people with learning disabilities, cannot) consent to the marriage and pressure or abuse is used'
- **Honour-Based Violence** - According to the Crown Prosecution Service (CPS) this is a crime or incident which has or may have been committed to protect or defend the honour of the family and/or community."
- **Child abuse linked to faith or belief** - No single definition is used in the UK, but according to the Metropolitan Police this can include; abuse that occurs as a result of a child being accused of witchcraft or of being a witch, abuse that occurs as a result of a child being accused of being 'possessed by spirits' that is, 'spirit possession' ritualistic abuse or Satanic abuse.

The Commissioner wishes to fund projects which can evidence need, emphasise partnership working and demonstrate an understanding of children and adult safeguarding policy.

APPLICATIONS WELCOMED:

- Training and empowerment initiatives including those for communities, professionals and young people
- Support for victims and those at risk of being victims
- Whole community based interventions, in particular those that take a restorative approach and address community leaders, and decision makers
- Developing cross sector partnerships to address harmful cultural practices
- Innovative research in partnership with community groups

APPLICATION EXCLUSIONS:

- The only project proposals which will be automatically excluded will be ones that cannot demonstrate a strong relationship with affected communities groups e.g. those representing diaspora communities.

HATE CRIME

Hate crime is defined as *“any criminal offence which is perceived by the victim or any other person, to be motivated by hostility or prejudice towards someone based on a personal characteristic”*. This common definition was agreed by all agencies which make up the Criminal Justice System (CJS) in 2007, the five monitored strands of hate crime area:

- Race or ethnicity,
- Religion or beliefs,
- Sexual orientation,
- Disability and
- Transgender identity.

The impact of a hate crime on a victim can be very personal and long lasting. Across the country, it is widely acknowledged by criminal justice agencies that hate crime is chronically under reported by victims and is prone to rise in the aftermath of national events such as terror attacks and the EU referendum result. Nationally police recorded figures indicate that hate crime levels have increased by 19% in 2015/16 compared with the previous year. 62,518 hate crimes were recorded by the police in 2015/16 compared with 52,465 in 2014/15. These are the crimes which we are aware of, as many hate crimes go unreported by their victims.

APPLICATIONS WELCOMED:

- Raising awareness of hate crime in schools / colleges
- Raising awareness of hate crimes in communities
- An innovative restorative approach which responds to incidents of hate crime not dealt with through the formal criminal justice system (Out-of-Court disposal administered by the Police or a conviction at Court). Please see Restorative Justice and Restorative Approaches / Practices section for further details.
- Working with perpetrators to challenge attitudes, stereotypes and prejudice
- Working with a specific strand within a designated area to improve awareness / community cohesion (such as the LGBTQ community or BME community within a particular location)
- Working with either members of the transgender community or disability community to help increase reporting of Hate Crime

APPLICATION EXCLUSIONS:

- None - Although all applications must demonstrate how the project will support victims or raise awareness of hate crime.

MANAGING OFFENDERS

Offender Management aims to reduce offending by young people and adults, and also reduce the risk of harm they may pose to communities. Research has shown that the best way to do this is to adopt an approach that targets support services around the seven pathways outlined by the National Offender Management Service (NOMS). The seven pathways are comprised of the following areas:

- Education, training and employment
- Accommodation
- Mental and physical health
- Drugs and alcohol
- Finance, benefits and debt
- Children and families of offenders
- Attitudes, thinking and behaviour

The Commissioner funds an Integrated Offender Management (IOM) service in the Hampshire area delivered through a contract. IOM delivers a team-based, collaborative approach to working with offenders and reducing offending.

Proposals for projects should include how services will cater to the needs of woman, as well as men. Woman represent a minority of those within the criminal justice system and their type of offending, as well as their needs which may be multiple and/or complex, is often different to men's. As a result, women are often overlooked in service design as well as criminal justice policy.

The Commissioner will welcome projects that promote a greater focus on early intervention, diversion and multi-agency approaches for woman, including police-based triage schemes and liaison and diversion services. Women who commit crimes are often some of the most vulnerable in our society and the Commissioner is looking to improve the protection of women and girls against violence, exploitation and coercion, and in doing so prevent much of the offending which can result from that pattern of victimisation.

APPLICATIONS WELCOMED:

As offender management is a complex area that requires a partnership response, we welcome applications that directly contribute towards achieving the following objectives:

- Offender management and reducing offending
- Reducing the risk of harm posed by offenders
- Supporting offenders to positively thrive through the development of life skills, both in prison and in the community so that they may stop offending and fully integrate within communities
- Promoting a greater focus on early intervention, diversion and multi-agency approaches for woman

APPLICATION EXCLUSIONS:

We will not accept applications for services included in contracts. Applications which are excluded from this grant opportunity include:

- Arrest referral service in Hampshire
- Pre-sentence assessment service in Hampshire
- Support for those who meet the IOM criteria in Hampshire

OLDER PERSONS

There is no agreed definition of older people within the UK. Society tends to associate old age with a change in employment through retirement. For men, this is currently 65 and for women this was 60. However due to changes in health care, life expectancy etc. it is now more complicated. Furthermore, pension ages are currently undergoing changes and will increase over the next several years. Please consider Older People as being defined as those aged 65 or over.

Hampshire and the Isle of Wight have a higher than average population of older people, in England those aged 65 or over make up approximately 17.7% of the population, for the Isle of Wight this is 26.6% of the population and for Hampshire 19% according to 2016 midyear estimates (including Portsmouth and Southampton).

As well as many standard times of crime older people are vulnerable to abuse, whether this be financial, physical, sexual, neglect etc; Door step crime (rogue traders, distraction burglaries etc.); Cyber Crime (Romance Schemes, Phishing emails etc.); and fraud (mail scams, courier fraud etc.). Fear of crime is also a significant concern for older people and can be enhanced by stories about the above or local anti-social behaviour.

The Commissioner has recently commissioned a number of services to support older people, including:

- Multi agency crime prevention and safety information event for older, socially isolated and vulnerable residents at higher risk of crime/ASB.
- Multi agency Crime prevention and victim support those affected by crime and disorder, with a focus on scams.
- Older Persons LGBTQI Hate Crime and Domestic Abuse project, raising awareness of issues, supporting victims and working to develop existing services to provide specialist support.

APPLICATIONS WELCOMED:

- Preventing crimes against older people and supporting those who are victims of it
- Schemes working with older perpetrators.

APPLICATION EXCLUSIONS:

- None – Although all applications must demonstrate how the project will support older people, bids will be considered that don't solely focus on older people, but older people must be one of the main stakeholder groups or targets of the bid

RESTORATIVE APPROACHES / PRACTICES

Restorative approaches and practice is described by the Restorative Justice Council as:

“An innovative and rapidly growing field. New ways of using restorative approaches are developing all the time, not just to prevent and repair harm but also to allow people to communicate effectively in a range of situations”.

“[Restorative practice] resolves conflicts and disputes before they escalate into crime and is an effective approach to dealing with anti-social behaviour and neighbour disputes”.

In his Restorative Justice and Restorative Approaches Strategy, the Police and Crime Commissioner said the following:

“It is encouraging that there is growing support for the use of restorative approaches in environments such as schools, neighbourhoods, local authority care homes and prisons, in order to reduce conflict and anti-social behaviour amongst these communities, thus preventing further harm from being caused”.

The strategy recognises the value of restorative approaches in resolving conflict and reducing harm outside of the formal Criminal Justice System. The Police and Crime Commissioner stated that his team would continue to look for new opportunities to pilot the use of restorative approaches and share the outcome of this with partners.

APPLICATIONS WELCOMED:

- Applications from partners wishing to use an innovative restorative approach to respond to conflict and disorder in particular settings; for example schools, local authority care homes and prisons. Thus preventing the criminalisation of individuals (where appropriate) and the creation of further victims.

APPLICATION EXCLUSIONS:

- Applications for Restorative Justice services as defined in the ‘Service Specification for Restorative Justice across Hampshire, Isle of Wight, Portsmouth and Southampton’ will not be considered under this grants round.
- Applicants should also be aware that the specification referenced above includes referrals made by the Police or Community Safety Partnerships for low level neighbourhood disputes and anti-social behaviour where there is no clearly identified harmed person or harmer and no enforcement option available to the Police.

SEXUAL CRIME

Sexual offences are a complex and sensitive area with a high level of under-reporting by victims to the police. Victims are all ages, from across society and cultures, and include those that are our most vulnerable citizens. Whilst the majority of reported victims are female, males are increasingly finding the courage to disclose their experience.

Recorded data across Hampshire, Isle of Wight, Portsmouth and Southampton highlights that those who commit such crimes are more often known to the victim, with the event taking place in familiar surroundings.

Victims of sexual crimes, particularly children, find it difficult to disclose and may never have the confidence to talk to someone. The impact of their experience can be devastating and have a lifelong impact. The Commissioner particularly welcomes applications that provide counselling and support to young victims of sexual crime.

The Commissioner continues to fund sexual crime support services and has worked in partnership to deliver some services through contracts. Services now managed through contracts (or due to commence April 2018) include:

- The Sexual Assault Referral Centre (SARC) which is jointly funded by the Commissioner, Hampshire Constabulary, NHS England, Hampshire County Council, Southampton, Portsmouth and the Isle of Wight Local Authorities.
- Independent Sexual Violence Advocates (ISVA's) in Hampshire, Isle of Wight and Portsmouth.
- 'Frankie Workers' in Hampshire and the Isle of Wight who offer counselling to those aged 0 – 18 years who have been traumatised as a result of being a victim of child sexual abuse, child sexual exploitation or FGM

APPLICATIONS WELCOMED (FOR 'CHILD SEXUAL EXPLOITATION' PLEASE SEE THE SECTION 'VULNERABILITY'):

- Empowerment support for victims and survivors of sexual crime
- Counselling for victims and survivors of sexual crime (particularly but not restricted to 'children')
- Prevention and awareness raising of sexual crimes linked to the internet and social media
- Adult Independent Sexual Violence Advocates (ISVA's) for the Southampton area
- Young person ISVAs
- Therapeutic support for children who express sexual harmful behaviours
- Improved access to sexual crime support services for ethnic minority communities, LGBT groups and people with disabilities
- Targeted work with vulnerable young people (please ensure you have agreement of a viable referral pathway prior to submitting your application)

APPLICATION EXCLUSIONS:

- We will not accept applications for services included in contracts. Please see appendix 4 for more details. Applications which are excluded from this grant opportunity include:
- Adult ISVA's for the Hampshire, Isle of Wight and Portsmouth areas.
- Frankie Workers for Hampshire and the Isle of Wight

SUPPORTING VICTIMS

Supporting victims and those affected by crime and disorder comes within the Commissioners priority “Champion community needs – Support victims and those affected by crime and disorder”. Work in this area includes the provision of the Victim Care Service (VCS) currently delivered by Victim Support.

Funding for victim care was devolved to Commissioners on 1 April 2015 and the VCS was created offering support to victims of crime via a team of approximately 50 volunteers and 30 staff. The VCS is open to all victims no matter what the type of crime, regardless of whether the crime has been reported to the police or not, and no matter how recently or how long ago the crime took place.

Victims are supported to cope and recover from the impact of the crime. Work has been undertaken to improve the offer of support to reach more victims of crime, with the implementation of an automatic text service

Priority Case Managers work with priority victims (as defined by the Code of Practice for Victims of Crime), providing an enhanced wrap-around pathway support by working with partner services rather than simply sign-posting. A variety of support and advice is available depending on the victims need:

Practical Support – for example the provision of alarms, signposting or referrals to other organisations and advice relating to the Criminal Injuries and Compensation Authority claims.

Emotional Support – talking about experiences with a trained supporter and working in partnership to develop ways to increase confidence or self-esteem.

Intensive Support – For victims of more serious crimes, such as sexual violence and domestic abuse, the most vulnerable victims and those that have been persistently targeted, intensive support is available.

OTHER AREAS OF WORK INCLUDE:

- Victim Voice Consultation. This is a joint consultation board with Hampshire Constabulary ensuring coherent oversight of all victim and witness consultation, draft consultation strategy and toolkits
- Court films such as walk through films of Crown and Magistrates courts within Hampshire and the Isle of Wight

APPLICATIONS WELCOMED:

The Commissioner welcomes applications that support victims of crime and help them cope with the impact of the incident, and/or to recover from the harm experienced, especially applications that focus on the supporting the following:

- Mental Health Service users
- Children and Young People
- Child Sexual Exploitation
- Elderly
- Hate Crime/Incidents

APPLICATION EXCLUSIONS:

- Applications for support and services that are already covered by the VCS.

*Programs that
have been
funded in the
past:*

www.hampshire-pcc.gov.uk/past-funding-allocations

VULNERABLE AND AT RISK

VULNERABLE PEOPLE WITHIN THE CRIMINAL JUSTICE SYSTEM

Vulnerable people should have access to support services at all points of the Criminal Justice System (CJS). This includes those affected by substance misuse, mental health, physical ill health or learning disabilities, victims and offenders and those at risk of being victims and offenders.

National and local data shows that both victims and offenders disproportionately have multiple and complex needs and face barriers in accessing and successfully completing treatment and support programmes. They are also likely to be the group who make the most demands on police and other emergency service resources.

The aim of the Constabulary's Out of Court Disposal (OoCD) Strategy, is that low level offences, as far as possible, are dealt with by non-custodial means. This includes fines, alcohol awareness courses, cannabis notices, and Restorative Justice.

Other areas of work include meeting the needs of people with mental ill health, in particular those who most frequently present to the Police and other emergency services.

Some young people come to the attention of police as a perpetrator, but further investigation discovers that they have been exploited and are being controlled by others. They are actually a victim of exploitation. For example 'County Lines', where young people are exploited and carry out drug deals on behalf of gangs from other areas.

Finally, the Commissioner wants to work with prisons within Hampshire and others catering for Hampshire people to address the needs of vulnerable prisoners both in custody and once they resettle in the community. Prisons report rising levels of self-harm, mental health issues and suicide. The Commissioner is seeking local interventions to mitigate these risks for those in prison and also those preparing to realise positive life chances on their return to the community, thereby reducing reoffending.

APPLICATIONS WELCOMED:

This theme will focus on developing a coherent evidence based approach to address the following priorities:

- Low level services to support vulnerable people who receive OoCD
- Raising awareness of County Lines and exploitation
- Preventing exploitation of vulnerable people
- Easily accessed mental health support for people in touch with the CJS including offenders, those at risk of offending and people picked up through section 136
- Support services for prisoners in Hampshire and the Isle of Wight
- We are looking for innovative interventions which show strong partnership links to statutory services and mainstream provision.

APPLICATION EXCLUSIONS:

- No specific exclusions, but we will not consider bids that do not demonstrate evidence of need and robust performance management systems.

CHILD SEXUAL EXPLOITATION (CSE)

Sexual exploitation of children and young people under 18 involves exploitative situations, contexts and relationships where the young person (or third person/s) receive 'something' (e.g. food, accommodation, drugs, alcohol, cigarettes, affection, gifts, money) as a result of them performing, and/or others performing on them, sexual activities. CSE can occur through the use of technology without the child's immediate recognition; for example, being persuaded to post images on the internet/mobile phones without immediate payment or gain.

A common feature of CSE is that the child or young person does not recognise the coercive nature of the relationship and does not see themselves as a victim of exploitation.

APPLICATIONS WELCOMED:

- The Commissioner welcomes applications focusing on supporting victims of Child Sexual Exploitation (CSE).
- Applications are also welcomed that educate young people on the dangers of CSE.
- Training to empower professionals to recognise the signs of Child Sexual Exploitation, and the knowledge to handle that information effectively
- Training for professionals to raise awareness of 'county lines' and its links with exploitation and vulnerable young people, and the knowledge to handle that information effectively

APPLICATION EXCLUSIONS:

- None - Although all applications must demonstrate how the project will support victims of CSE

MODERN SLAVERY

There are many different characteristics that distinguish slavery from other human rights violations, however only one needs to be present for slavery to exist:

- Physically constrained or has restrictions placed on his/her freedom of movement
- Forced to work - through mental or physical threat
- Owned or controlled by an employer usually through mental or physical abuse or the threat of abuse
- Dehumanised, treated as a commodity or bought and sold as property

Hampshire is an early adopter of the Independent Child Trafficking Advisers (ICTA), a central government funded programme. This involves close partnership working to ensure their effectiveness.

The Modern Slavery Partnership was launched in 2015. Its first year has focussed on looking at structures, representation, training, and awareness raising through a number of campaigns.

APPLICATIONS WELCOMED:

- Applications are welcomed that focus on supporting victims of modern slavery and trafficking that support the national strategy.

APPLICATION EXCLUSIONS:

- None.

YOUTH DIVERSION

Fewer young people are committing crimes, but there are still too many young people coming into contact with the criminal justice system. The Commissioner is looking to support targeted diversionary and youth offending prevention services, available to young people up to the age of 25 years. The services should be targeted at young people who have been in trouble with the police, 'at risk' of committing a crime or involved in anti-social behaviour.

A variety of open access youth provision is needed to support and facilitate those more targeted services. Universal services can often be a stepping stone for young people accessing support services, with trained youth workers being able to observe behaviours and interactions, offering familiarity for young people, while also being there as a step-down support package from a more targeted to a universal youth service.

A review of youth diversion services across Hampshire, Isle of Wight, Portsmouth and Southampton has been conducted by the Commissioner's Team, and it has thrown up many questions as to the network of support and interventions available. The results of this review will be used to inform commissioning decisions for the future.

While applications for all prevention services will be considered, we would recommend that providers have an understanding of what is already available in the local area so that applications complement existing provision.

Adolescent to Parent Violence (APV) is included within this section. Abuse can take different forms, including physical violence, damage to property and financial exploitation. Emotional abuse, such as humiliating language and making threats, as well as heightened sexualised behaviours are also forms of abuse. Applications are welcomed for all age groups, not just limited to teenagers.

APPLICATIONS WELCOMED:

- The prevention of offending and re-offending by young people remains a priority and we welcome services that target those individuals identified at risk of entering the criminal justice system.
- We would particularly welcome collaboration between services and recognition of local concern and need. Any proposal should complement the work of the Youth Offending Teams (YOTs) and be submitted in consultation with them.
- Tackling Adolescent to Parent Violence (APV). Please ensure that proposals are based on credible evidence of what works. The following links contain useful information. https://www.gov.uk/government/uploads/system/uploads/attachment_data/file/420963/APVA.pdf , <http://www.rcpv.eu/resources>
- Develop specialist support for the most vulnerable and challenging young people. This should be in consultation with, and complement the work of the local Youth Offending Team.

APPLICATION EXCLUSIONS:

- Applications for the purchase of CCTV equipment will not be considered as part of this grant around, unless it is being utilised in a new and innovative way.

FINAL THOUGHTS

The success of this bidding round is entirely dependent on the quality and strategic necessity of the applications received. The Commissioner is asking existing and potential providers, whether they are in statutory or independent sectors, to bring as much knowledge, expertise, skills and creativity to address real issues that improve people's lives, at a time when resources are increasingly scarce.

Michael Lane, the Commissioner, said "In my determination to keep our communities safer, I will work in partnership to deliver the best outcomes, drawing on local intelligence and a sound evidence base. I will enhance existing partnerships and build new ones to best meet the needs of victims and offenders. I am therefore looking forward to receiving your applications and encourage you all to submit exciting and innovative approaches to support my vision for a safer Hampshire, Isle of Wight, Portsmouth and Southampton."



Grant Criteria and Scoring

Grant Criteria

The Police and Crime Commissioner will be assessing the applications against the following criteria; if the answer is no to any of the following questions, your application will be unsuccessful in receiving funding:

- Does the project / service deliver on one or more of the Police and Crime Plan Priorities?
- Does the project / service display a clear contingency for withdrawal and / or demonstrate that sustainable funding is in place should unforeseen circumstances occur?
- Is the organisation applying for funding a registered charity or company?
- Has the bidder successfully completed the mandatory safeguarding checklist (providing answers to all questions asked)?
- Does the organisation applying for funding have sufficient financial stability and are they able to demonstrate this with the level of reserves held?

If the answer is yes to any of the following questions, your application will be unsuccessful in receiving funding:

- Is the project delivering a service that should be the responsibility of another agency?
- Does the project / service provide activities that the Commissioner is already funding via a contracted service?

Grant Scoring

The Police and Crime Commissioner will be scoring each application on the evidence provided and against the following areas. Each area will receive a score as follows: 0=fail, 2=poor, 4=good & 5=excellent). Therefore, your application will be stronger if you include evidence on the following:

- Evidence that there is a clear methodology for evaluation
- Evidence that the bidder would be the best possible provider
- Evidence that there is a need for the service that is not already being met
- Evidence that the project / service has support from partners
- Evidence that the Commissioner is the best person to fund the service
- Evidence that funding has been secured from elsewhere (including own funds being used)
- Evidence that the project / service has clear referral pathways
- Evidence that the project / service is likely to achieve its outcomes
- Evidence that the project / service has a robust and sustainable delivery model
- Evidence that the project / service is value for money

Grants Process

The Commissioner will be accepting applications to the Safer Communities Fund 2018/19 from Monday 2 October 2017 until Tuesday 31 October 2017 at 16:00. **Please note that applications submitted after this time will not be accepted.**

The application form is web based and can be found at the following address: <http://www.surveygizmo.com/s3/3795208/Safer-Communities-Fund-2018-19> . It is recommended to use Google Chrome to fill out the application. All questions must be answered. Failure to do so will invalidate your application.

All applications must be submitted using this form; however if you have a valid reason why this is not possible, please contact the office at opcc.commissioning@hampshire.pnn.police.uk and we will arrange for a Word based copy of the form to be sent to you.

The maximum amount of funding that can be applied for per application is £50,000.

As part of the application process, we will require all applicants to complete a mandatory safeguarding checklist which is available to download from the following address: <https://www.hampshire-pcc.gov.uk/wp-content/uploads/2017/10/Safeguarding-Checklist-201819.docx> . If you require a copy of our safeguarding policy, please contact the office at opcc.commissioning@hampshire.pnn.police.uk and a copy will be sent to you.

We also strongly advise anyone applying for funding to approach their local Community Safety Partnership (CSP) representatives to seek support for their project. If your application is for services regarding Domestic Abuse or Sexual Crime, we also suggest that you talk to the relevant lead local authority officer to discuss the need for such a service in the geographical area. Contact details can be found at appendix 4. Applications will be scored based on the support of partners so it is in your best interests to gain their support.

We will not be accepting any supplementary documentation with your application form. Instead, please ensure all information you wish to be taken into consideration, as part of your submission for funding, is detailed within your application form.

Once you have completed your application form please click on the submit button. To ensure that your application is recorded correctly please email the Commissioning Team at opcc.commissioning@hampshire.pnn.police.uk and provide the following information:

- Name of organisation
- Name of project applied for
- Name of contact person at the organisation
- Date and time of final submission
- Your Safeguarding Checklist

A member of the Commissioning Team will log the application and send a copy of the form to you for your records, along with a reference number. We then ask that you check the information within your application is correct. It is your responsibility

to ensure that you have emailed the Commissioning Team notification your application has been submitted and to check that you have received your reference number. We will endeavour to send a copy of your application form and reference number within 5 working days.

The Police and Crime Commissioner's office accepts no responsibility if we do not receive your application and you have not completed all the steps.

We intend to inform applicants of the outcome of their bid by Wednesday 31 January 2018, although this may be determined by the number and range of applications. Those who are successful will then be required to work with the Commissioner's team to agree the performance indicators for their project / service.

Please ensure that you read all the information provided before you fill out and submit your application.

Application notes

When writing your application please ensure that if you explain any acronyms that you use.

Application forms can be saved as you go and you can find this option at the top of every page. If you have any issues with the form, such as losing the page or not receiving an email with the link to your form, please email opcc.commissioning@hampshire.pnn.police.uk and we will be able to access your application and send you the link.

To help you in completing the form, please note the following:

Section one – About your organisation (Questions 1 - 7)

Questions 1 - 4

Organisational name – please give the name of the organisation for which the application of funding is being made and the contact address. If successful, payment will only be made to the organisation specified in this question. Also ensure that you can give two contacts within your organisation that we can speak to about your application.

Question 7

Please advise what contingencies your organisation has in place to ensure you can continue to deliver the project / service in the event of a staffing shortage or if funding is withdrawn from elsewhere.

Section two – About your project / service (Questions 8 - 29)

Please complete all questions to tell us about the project / service you are requesting funding for and how it meets the grant criteria.

Question 13

Please advise what outcomes you are looking to achieve with your project / service and what measures you will use to demonstrate that you have achieved them, including how you will collect any data to demonstrate this. Ensure that a minimum of three intended outcomes and measures are detailed under this question. Please keep these as brief and to the point as possible.

Question 16

Please advise which Police and Crime Plan priority areas your project will contribute towards. Please tick as many boxes as are relevant.

Question 17

Please advise which commissioning theme your project will contribute towards. Please select the theme that is most relevant to your project / service. The 'other' box is provided for you to include innovative and new approaches if it does not fit the suggested themes.

Questions 21

Please tell us the expected number of service users who are in direct contact with your project / service and those who will directly benefit as a result. At this stage,

we do not want the number of people who will benefit because of the project, just the number of service users who directly benefit from it.

Question 22

Please tell us which geographical area(s) will benefit most from your project / service. Please tick as many areas as are relevant. If your project covers more than one area please indicate the percentage of cover each area will receive. For example, if a service is covering Southampton, Eastleigh and Test Valley but is delivered in Southampton and mainly supports Southampton residents, then the percentage cover could be 60%, 20%, 20% respectively.

Question 23

If your project or service is being delivered in a school, college or prison, please advise if you have already sought agreement from the establishment and give details of these arrangements. We strongly advise you to gain agreement before applying for funding.

Question 25

Please give details on how users will access the project / service in each area. For example, is the venue near public transport, or will transport to the project / service be provided.

Questions 26 & 27

Please give details on how individuals will be referred into your service, including who would normally refer. Please also give details on your referrals mechanisms after an individual has used your service.

Question 29

Please provide details of the Community Safety Partnership representative(s) or relevant lead local authority officer that you contacted to discuss your application and if they were supportive of your project / service. Contact details can be found at appendix 4. Applications will be scored based on the support of partners so it is in your best interests to gain their support.

Section three - Financial information (Questions 30 - 43)

These questions relate to finance for your project.

Question 30

Please provide details regarding your level of free reserves for your organisation. This information will be used to determine your financial resilience over the course of the period of your grant.

Question 31

Provide a breakdown of all costs of the project / service. The total figure from this will need to be entered under question 33a.

Question 32

This question refers to any other funding you have secured from other organisations towards your project / service. Other secured funding will greatly strengthen your application for funding from the Police and Crime Commissioner. Please do not include contributions in kind. The total from this question will be entered under question 33b.

Question 33

Totals from questions 31 and 32 to be entered in to the relevant boxes, with the shortfall calculated and entered.

Question 34

Total amount of funding requested from the Police and Crime Commissioner to be entered within the box. Please note this cannot exceed £50,000.

Question 35

Please advise how you will seek additional funding for your project is the amount requested from the Commissioner does not cover the shortfall for your project.

Question 36

Please let us know if you received funding from the Police and Crime Commissioner's Community Safety Fund in 2017/18 and, if so, whether you are expecting to have any funding remaining by 31 March 2018.

Section four - Other Information (Questions 44 - 49)

Question 48

Examples of things which may be relevant to include are:

- We have an equality and diversity policy. We ensure our staff receive equalities and diversity training. We actively encourage and support all sectors of the community including those having protected characteristics to take part in this project.
- We have an open and transparent recruitment and promotion policy.
- The organisation's culture fully embraces diversity.
- Our constitution/ this project focuses on fostering good community relations across all sectors of society by...
- This project will advance equality of opportunity for everyone by...

Section five - Final step and submitting your form

When you are happy with your application, click 'Submit'. Once you have clicked 'Submit' you will not be able to go back and make any amendments to the previous pages. Therefore, please only click 'Submit' if you are happy with all the information contained within your application.

To ensure that your application is recorded correctly, please email the Commissioning Team at opcc.commissioning@hampshire.pnn.police.uk and provide the following information:

- Name of organisation
- Name of project applied for
- Name of contact person at the organisation
- Date and time of final submission
- Your Safeguarding checklist

One of the Commissioning Team will log the application and send a copy of the form to you for your records, along with a reference number. We will endeavour to send a copy of your application form and reference number within 5 working days.

The Police and Crime Commissioner accepts no responsibility if his team does not receive your application and you have not completed all the steps.

Any amendments or queries must be sent to us before the closing date of Tuesday 31 October 2017 to ensure that they can be actioned.

How to contact us

If you have any comments, queries or issues with the application form or information, please contact the Commissioning team by emailing us at the following address: opcc.commissioning@hampshire.pnn.police.uk

Partnership Contact Details

Community Safety Managers

In order to ensure that the application you are submitting to the Commissioner is relevant to each District or Borough, you can contact the Community Safety Managers at the below addresses to seek their support:

Community Safety Partnership	Manager	Email Address
Basingstoke, Hart and Rushmoor	Caroline Ryan	caroline.ryan@communitysafetynh.org
	James Knight	James.Knight@communitysafetynh.org
East Hampshire	Ryan Gulliver	ryan.gulliver@easthants.gov.uk
Eastleigh	Melvin Hartley	Melvin.hartley@eastleigh.gov.uk
Fareham	Narinder Bains	nbains@fareham.gov.uk
Gosport	Sorrell Kenny	sorrell.kenny@gosport.gov.uk
Havant	Tim Pointer	tim.pointer@havant.gov.uk
Isle of Wight	Amanda Gregory	Amanda.gregory@iow.gov.uk
	Helen Turner	Helen.Turner@iow.gov.uk
New Forest	Brian Byrne	brian.byrne@nfdc.gov.uk
Portsmouth	Lisa Wills	Lisa.wills@portsmouthcc.gov.uk
Southampton	Gavin Derrick	Gavin.derrick@southampton.gov.uk
	Alison Heydari	alison.heydari@hampshire.pnn.police.uk
Test Valley	Andrew Pilley	apilley@testvalley.gov.uk
Winchester	Sandra Tuddenham	studdenham@winchester.gov.uk

Domestic Abuse and Sexual Crime Commissioners

You should also consult the following domestic abuse or sexual crime commissioners relevant to each area in order to:

- a) Seek their support for your bid
- b) Confirm that your proposal is not already covered by a contract

Contact details can be found below:

Service	Name	Email Address
Domestic Abuse Hampshire	Jude Ruddock- Atcherley	jude.ruddock- atcherley@hants.gov.uk
Sexual Crime Hampshire	Liz McGill	liz.mcgill@hants.gov.uk
Domestic Abuse and Sexual Crime Isle of Wight	Gilles Bergeron	gilles.bergeron@iow.gov.uk
Domestic Abuse and Sexual Crime Portsmouth	Bruce Marr	bruce.marr@portsmouthcc.gov.uk
Domestic Abuse and Sexual Crime Southampton	Hilary Linssen Sandra Jerrim	hilary.linssen@southampton.gov.uk s.jerrim@nhs.net

Police and Crime Commissioner's Contact Details

If you would like to contact us about any of the subject matter covered within this document, please use the information below:

Police and Crime Commissioner for Hampshire, Isle of Wight, Portsmouth and Southampton
2nd Floor St. George's Chambers
St. George's Street
Winchester
SO23 8AJ

Telephone: 01962 871595

Email: opcc.commissioning@hampshire.pnn.police.uk

Website: www.hampshire-pcc.gov.uk



@HantsPCC



Police and Crime Commissioner for Hampshire